



INSTRUCTION BULLETIN

No. 9006404
Machine: S10
Published: 05-2009
Rev. 00

NOTE: DO NOT DISCARD the Parts List from the Instruction Bulletin. Place the Parts List in the appropriate place in the machine manual for future reference. Retaining the Parts List will make it easier to reorder individual parts and will save the cost of ordering an entire kit.

NOTE: Numbers in parenthesis () are reference numbers for parts listed in Bill of Materials.

Installation instructions for **kit number 9006403**

SYNOPSIS:

This kit contains the parts needed to replace the filterbox and filterbox cover on S10 machines. Please follow step-by-step instructions.

SPECIAL TOOLS / CONSIDERATIONS: NONE

(Estimated time to complete: 1 hour)

PREPARATION:

1. Park the machine on a clean level surface, turn off the machine, remove the key, and set the parking brake.

FOR SAFETY: Before leaving or servicing machine, stop on level surface, turn off machine, and remove key.

NOTE: Refer to Fig. 2 for locations of all parts removed in Step 2 through Step 6.

2. Remove the front cover from the machine. Set the front cover aside. Discard the mounting hardware.
3. Remove the filterbox cover from the machine. Discard the filterbox cover.
4. Remove the dust filter from the machine. Set the dust filter aside.
5. Disconnect the gas spring, vinyl sleeve, and filter shaker from the filter box. Set all removed components and hardware aside.
6. Remove the filterbox from the machine. Set all hardware aside. Discard the filter box.

INSTALLATION:

1. Apply a coat of adhesive onto the lip seal (7) and install the lip seal into the filterbox weldment (2). Refer to old filterbox weldment and Fig. 1 for location of the lip seal.

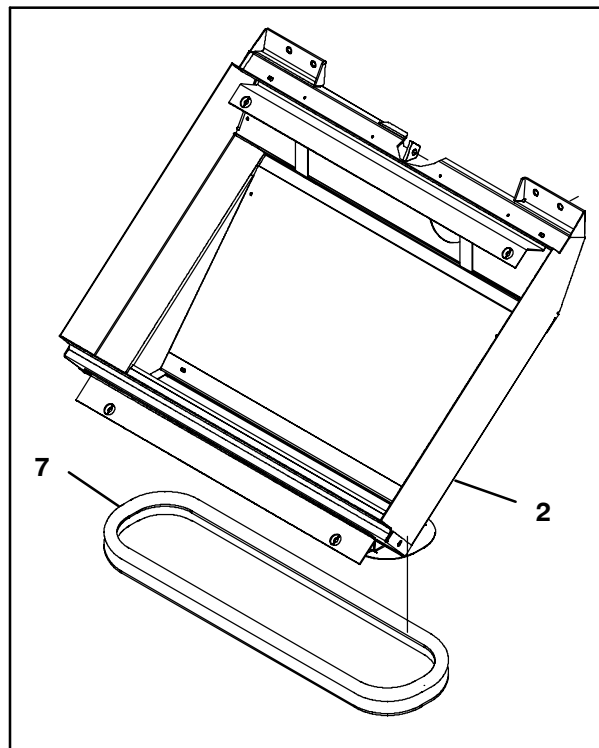


FIG. 1

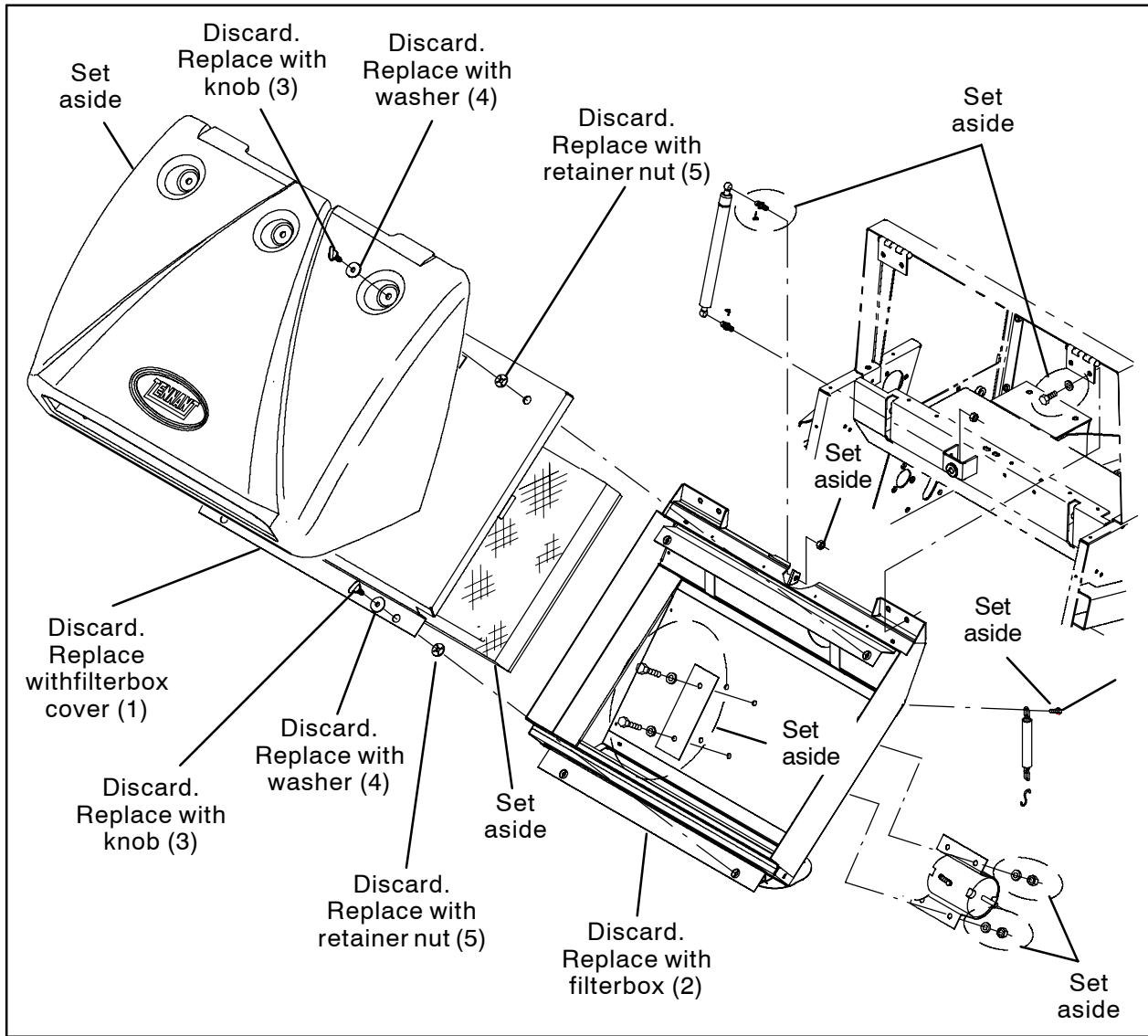


FIG. 2

2. Install the rubber seal (8) onto the new filterbox cover (1). Refer to old filterbox cover and Fig. 2 for seal location.

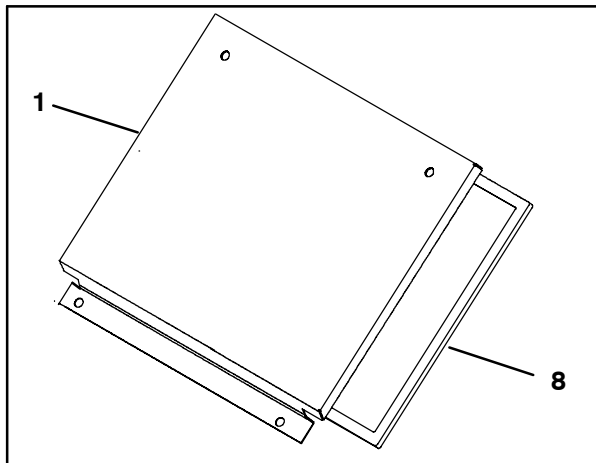


FIG. 3

3. Place the new filterbox weldment (2) into the machine and install the gas spring, vinyl sleeve, and filter shaker onto the filterbox weldment. Refer to Fig. 2.

4. Secure the filterbox weldment (2) to the machine. Refer to Fig. 2.

5. Reinstall the dust filter and seal onto the machine. Refer to Fig. 2.

6. Install the new filterbox cover (1) onto the machine. Refer to Fig. 2.

7. Use the five knobs (3), washers (4), retainer nuts (5), and clips (6) to secure the front cover to the machine. Refer to Fig. 2 and Fig. 4 for locations of parts.

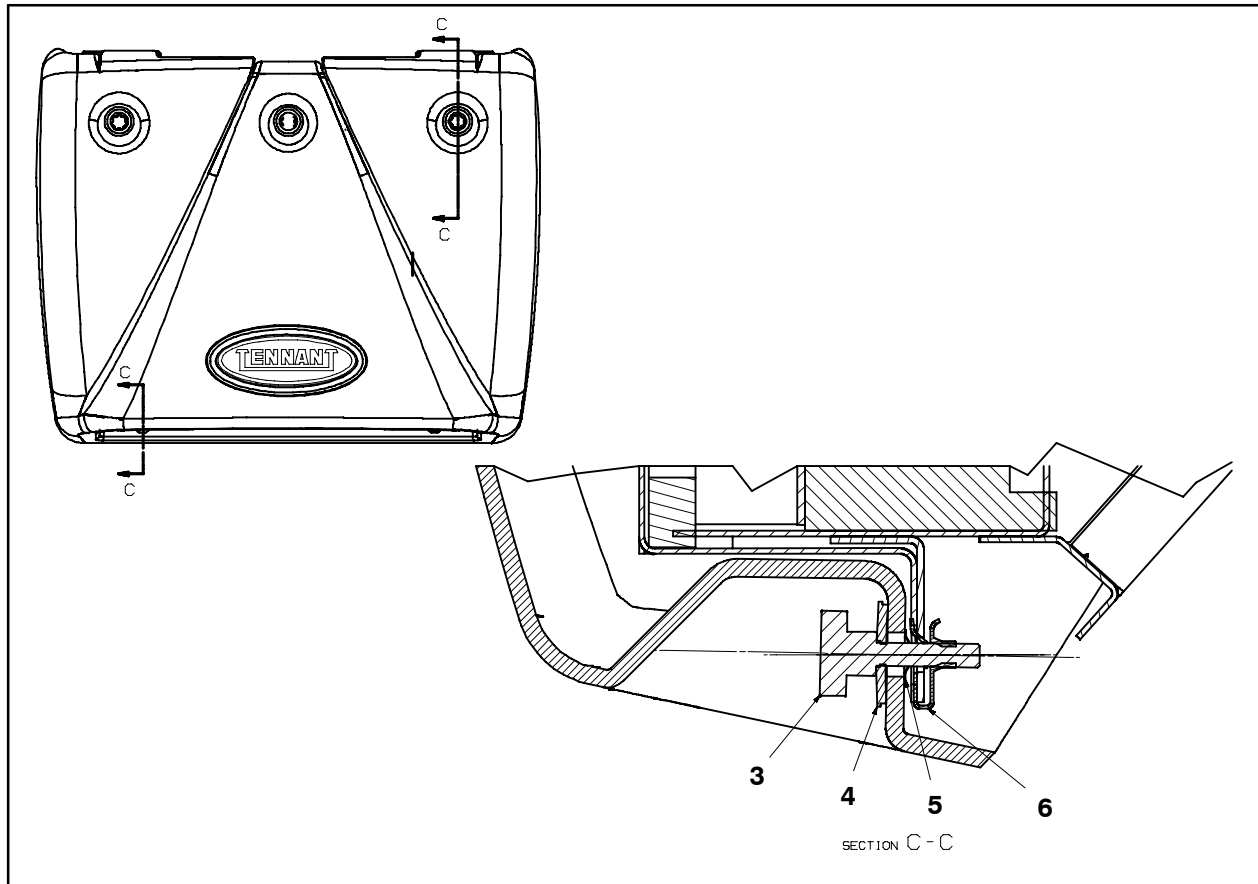


FIG. 4

BILL OF MATERIALS FOR FILTERBOX WLDT KIT, REPLMT [S10] - 9006403

Ref.	Tennant Part No.	Description	Qty.
▽	9006403	FILTERBOX WLDT KIT, REPLMT [S10]	1
▲	1 1046509	COVER WLDT, FILTERBOX	1
▲	2 1046511	FILTERBOX WLDT	1
▲	3 1052189	KNOB, STUD, .25-20 1.1	5
▲	4 30169	WASHER, SEALING, 0.28B 1.25D SS, NEO	5
▲	5 1052228	NUT, RETAINER, R/.250D	5
▲	6 82138	NUT, SPD, CLIP, .25-20 [.025-.150]	5
▲	7 08157	SEAL, LIP, 90, 1.3W GRIP 054.0L	1
▲	8 01064	SEAL, RBR, OPEN, 0.50, 0.75W 92.0L ADH	1

TENNANT COMPANY
P. O. Box 1452
Minneapolis, MN 55440-1452